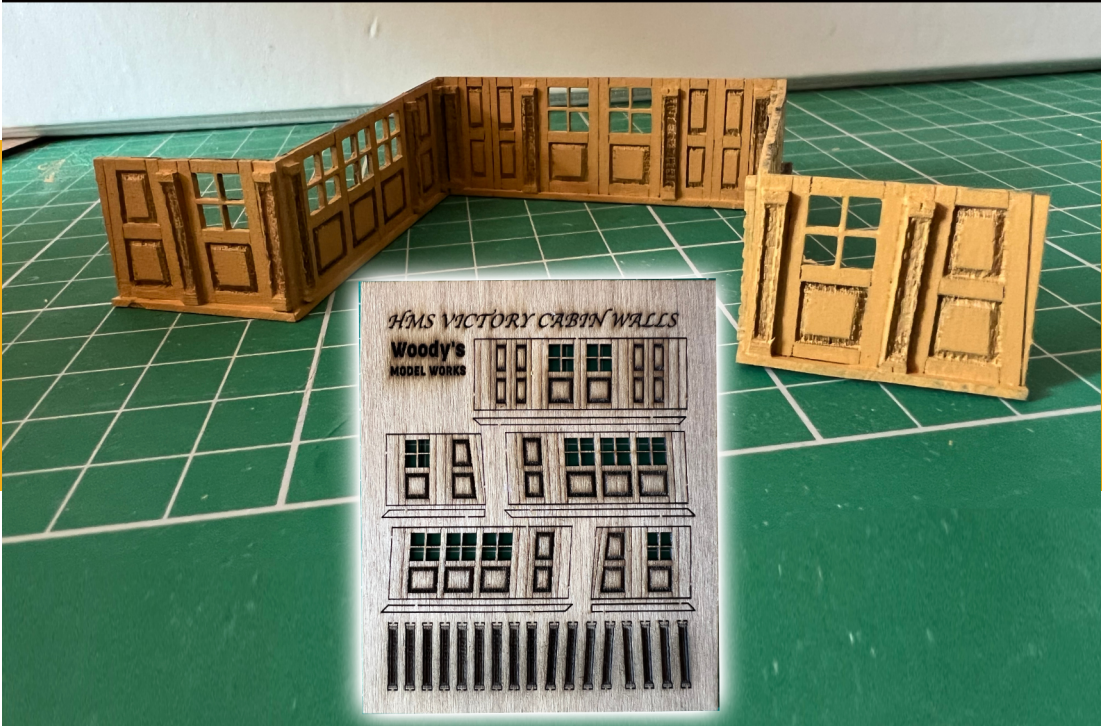


**Woody's
MODEL WORKS**

HMS Victory

CABIN WALLS ENHANCEMENT SET



BUILD GUIDE



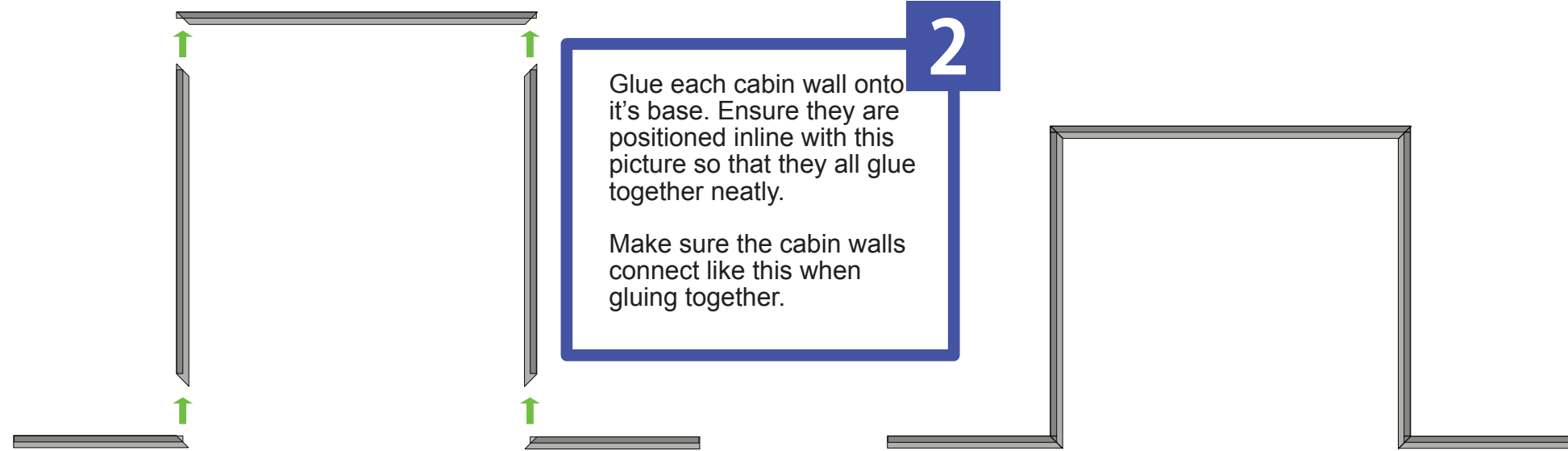
1
Glue the vertical and slightly angled pillars in the locations shown here.



3
I recommend you glue spare pieces of wood on the unseen back faces to strengthen them and square them up.



4
COMPLETE :-)



2
Glue each cabin wall onto its base. Ensure they are positioned inline with this picture so that they all glue together neatly.

Make sure the cabin walls connect like this when gluing together.