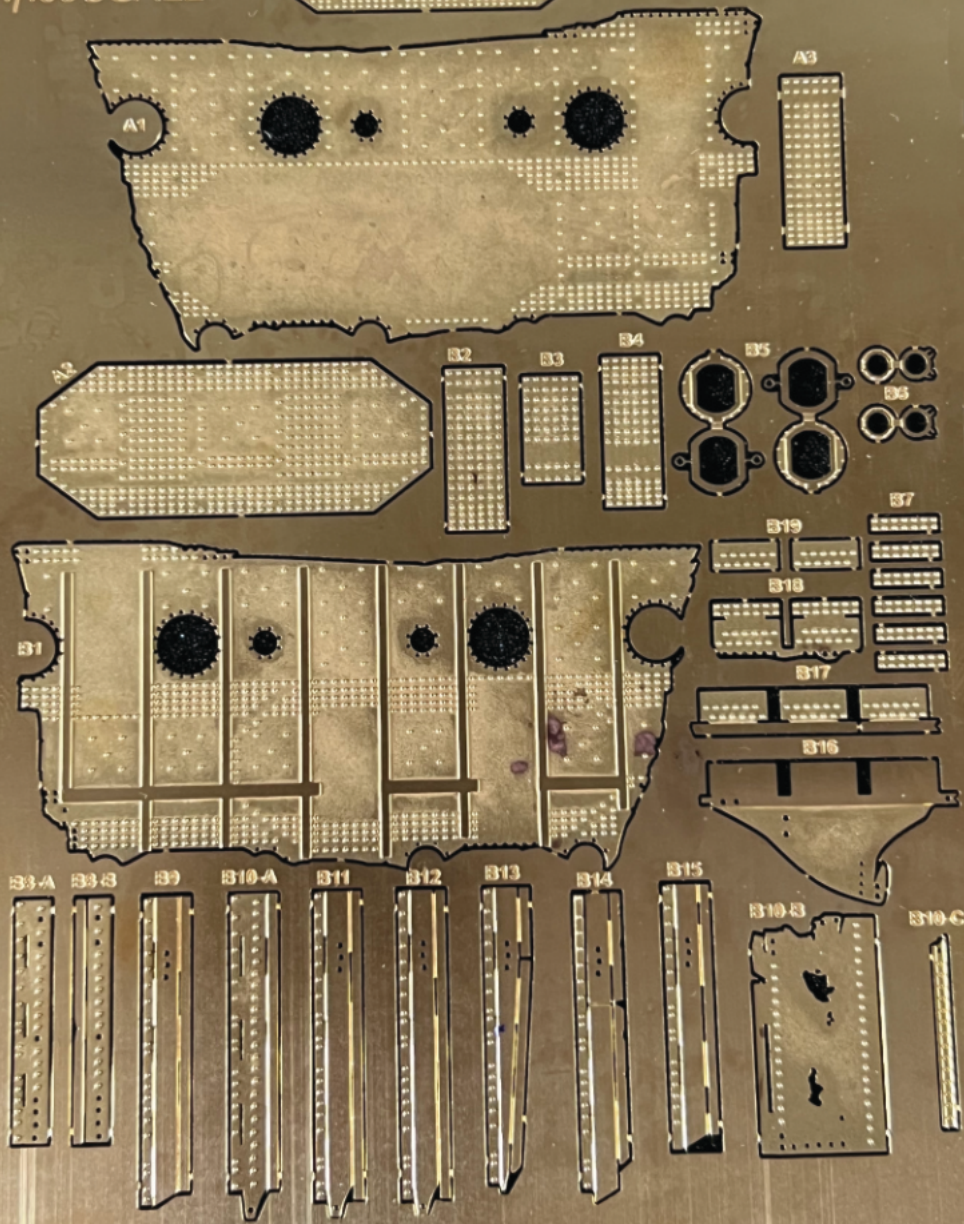


RMSTITANIC  
1/100 SCALE

MARITIME  
MODELS

THE  
BIG PIECE



# MARITIME TITANIC

## MODELS

### THE LITTLE BIG PIECE

# ASSEMBLY GUIDE

## INTRODUCTION

Thank you for purchasing this mini model kit of the famous 'Big Piece' of the RMS Titanic wreck.

This little kit is available in 2 scales. This guide demonstrates the assembly of the larger 1/100 version. But the method and part numbers are exactly the same for the smaller 1/200 version.

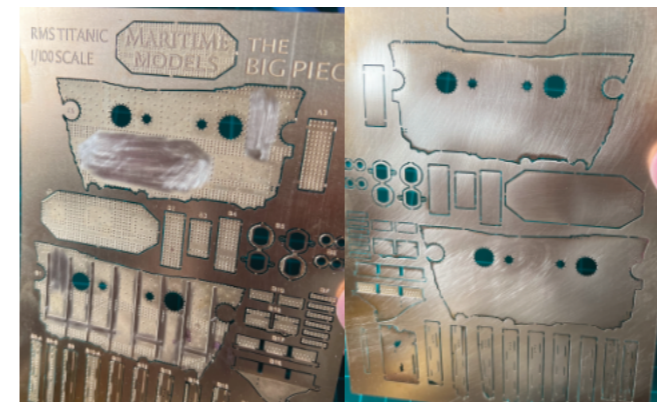
Each part is numbered for identification and also my recommended build order. You will begin with part A1 and finish with part B19

**Please read these full instructions before you begin and ensure you fully understand the best methods for you.**

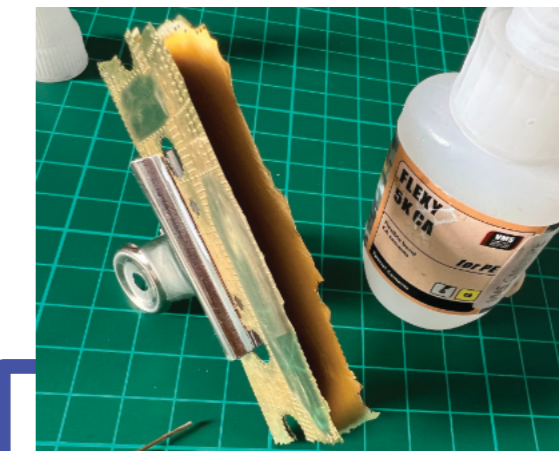
### TOOLS RECOMMENDED:

- Flat headed & fine headed tweezers
- PE Bending Tool
- Sanding stick
- Tamiya CA Cement & Extra Thin
- Model knife
- Magnifier (for the 1/200 version)
- Blue tack (useful as a PE pickup/placement tool)
- Clamp (as shown in step 2)

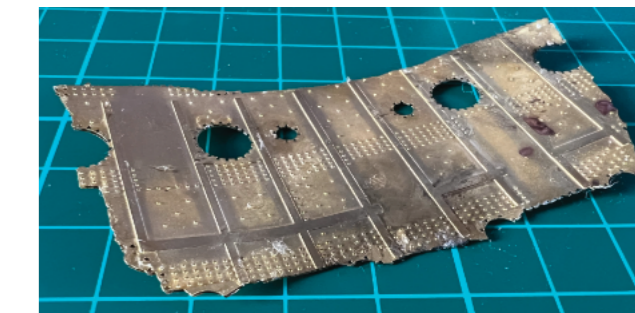
## REFERENCE PHOTOS



1 Begin with lightly sanding the areas which will be glued together. This will assist the glue to create a good bond.



2 Align the 2 large sections A1 and B1 and clamp them together. Ensure they align perfectly before dropping CA glue into the open side. Then press together. Then glue the other side.

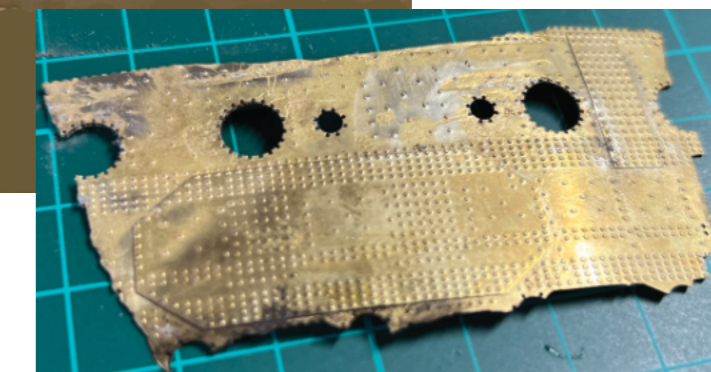
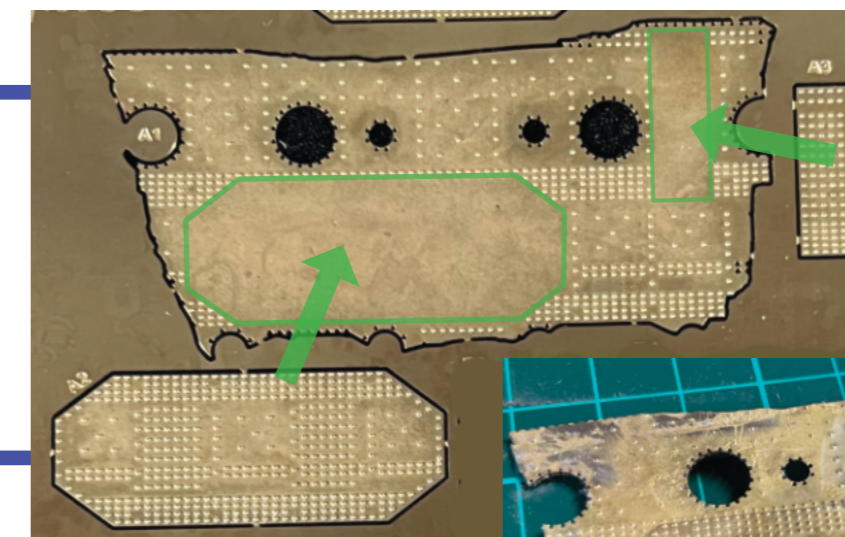


3 Once these 2 sections are glued together. You may wish to create a subtle bend as shown. To accurately replicate how the actual Big Piece is bent.

Doing this once complete could cause the frames to detach.

4 Add plates A2 and A3 to the outer side (A1)

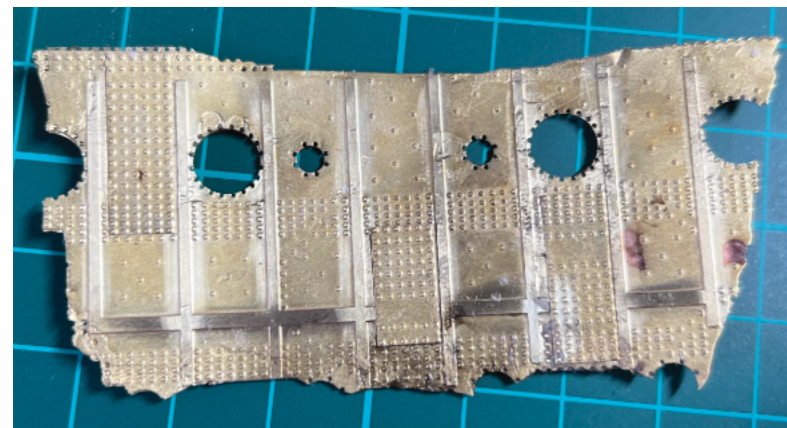
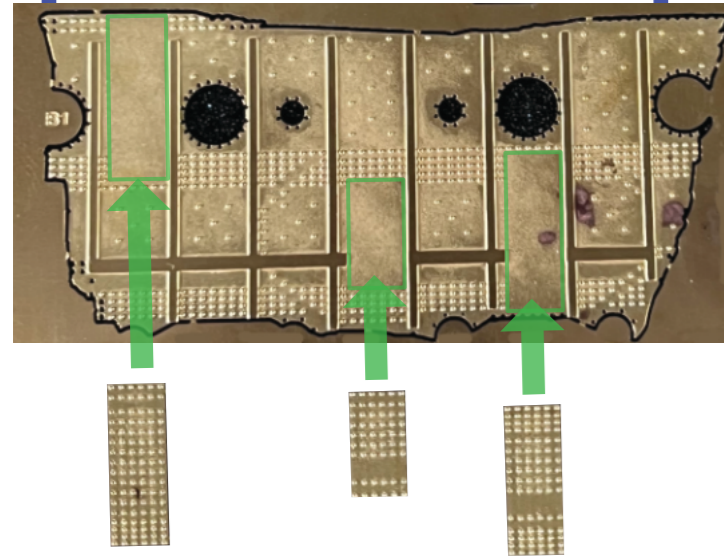
Take care to ensure you position them the correct way up and have the rivets line up.



5

Add plates B2, B3 & B4 to the inner side (B1)

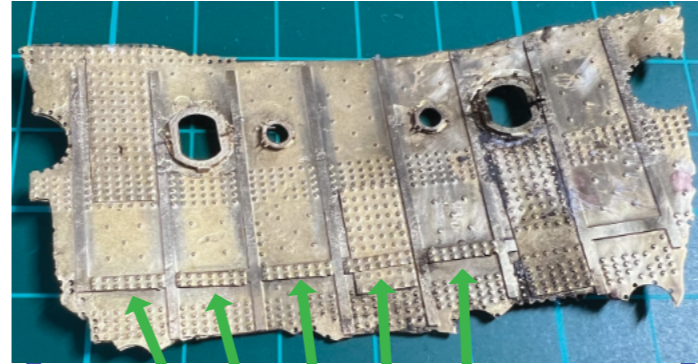
Take care to ensure you position them the correct way up and have the rivets line up.



6

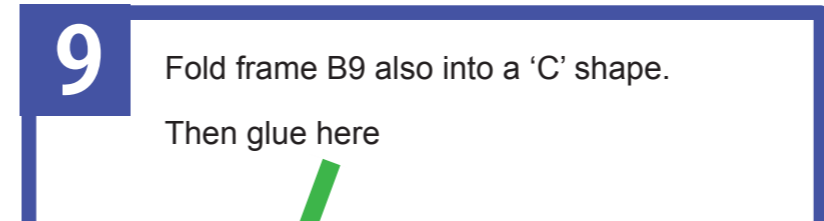
Take the Port hole frames B5 & B6 and fold them as pictured.

Also fold up and twist the window locks on the B5's.



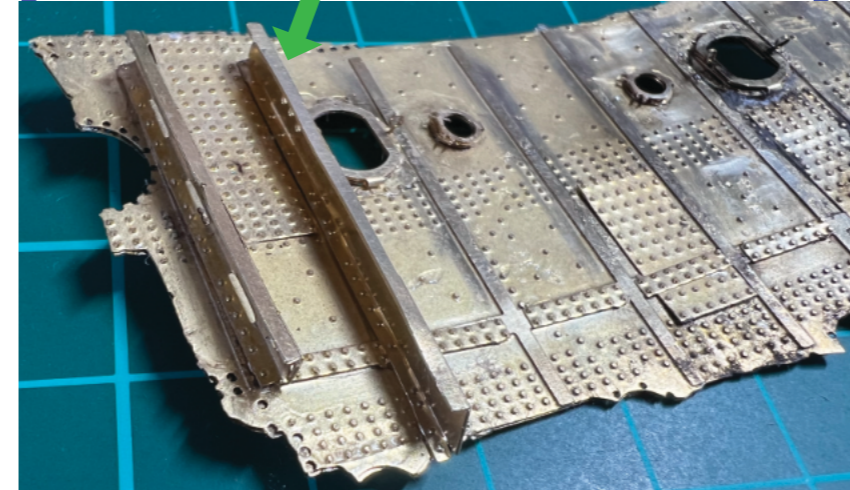
7

Add 5 small B7 plates here



9

Fold frame B9 also into a 'C' shape. Then glue here



8

Take frames B8A & B8B and glue them together. The rivet holes should line up.

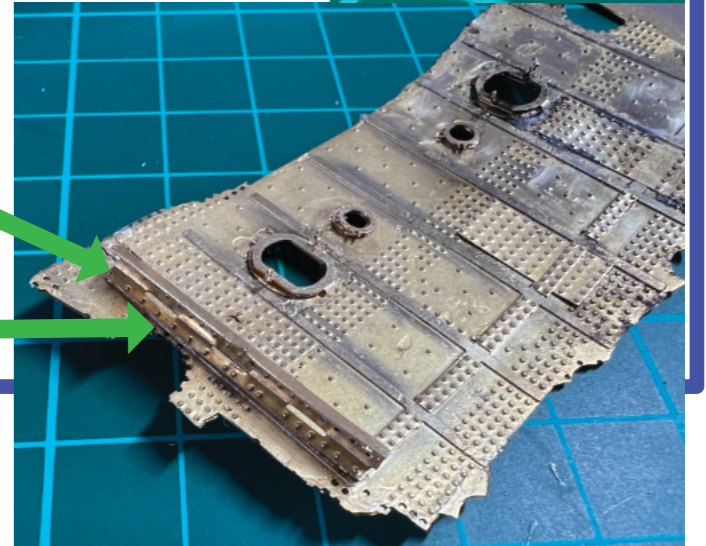


Use a PE fold tool to fold this into a 'C' shape.



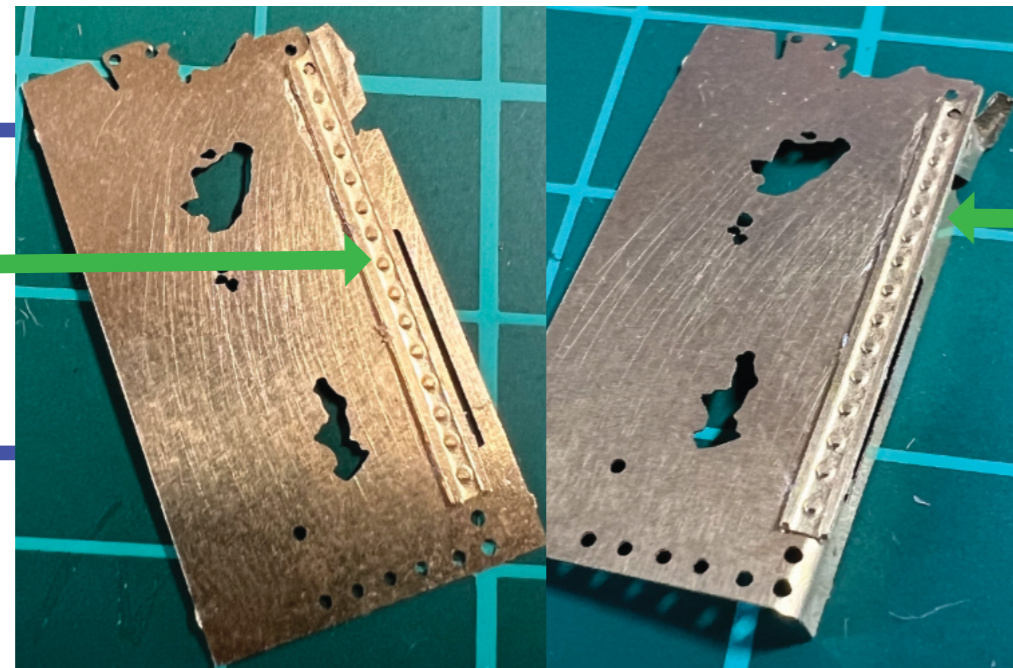
Glue to the model here.

Always ensure the rivet side is here



10

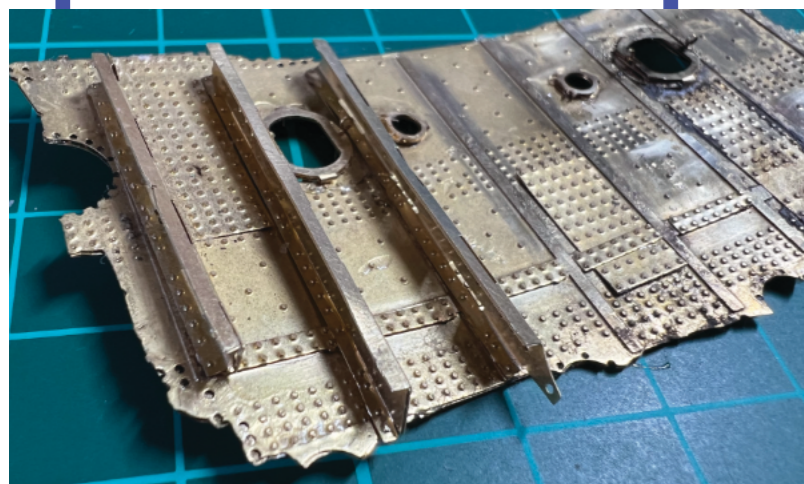
Turn part B10-B over.  
Glue part B10-C here.



Fold the outer edge like this.

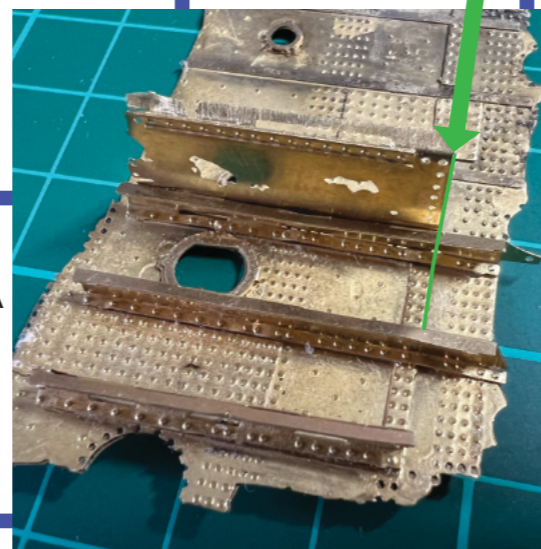
11

Fold frame B10-A also into a 'C' shape.  
Then glue here



12

Glue the B10-B/C assembly to frame B10-A like this



Ensure it lines up here

13

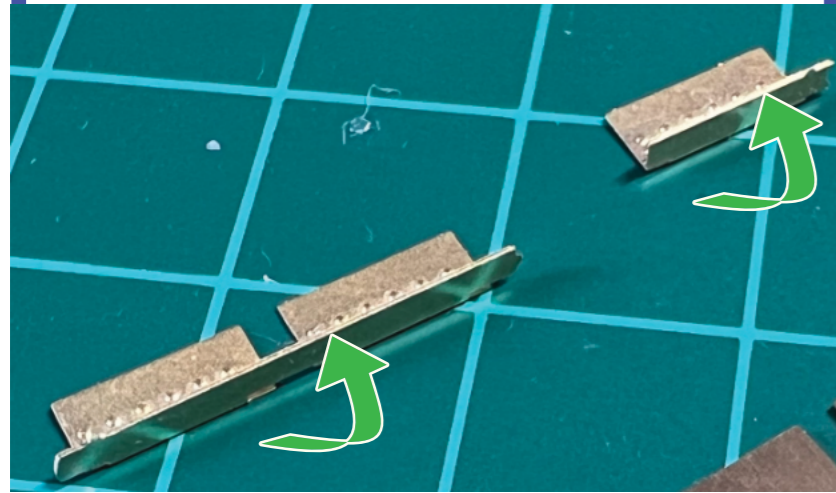
Continue with the remaining frames folding them into 'C' Shapes and adding them working in number order and from left to right.

Fold frame B14 to simulate damage like this before adding to the model



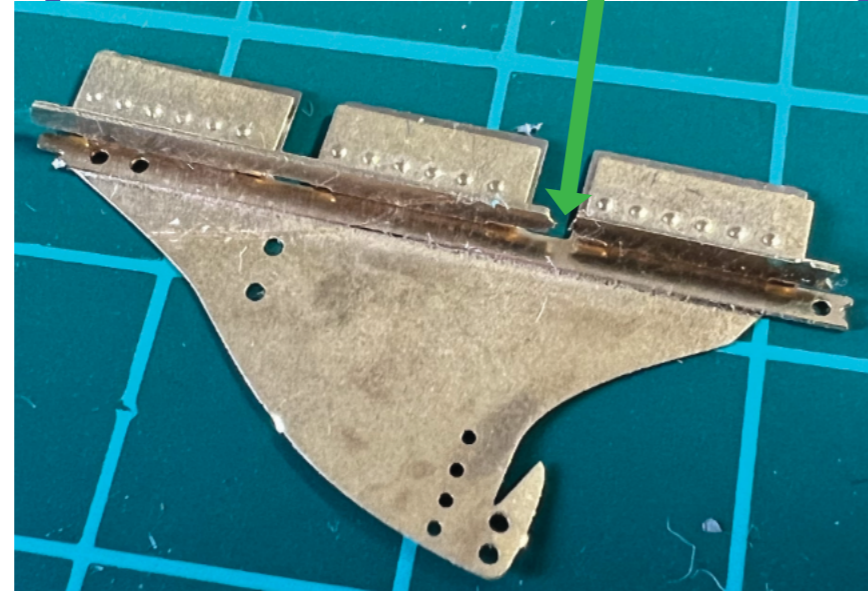
14

Fold B17 and separate as shown



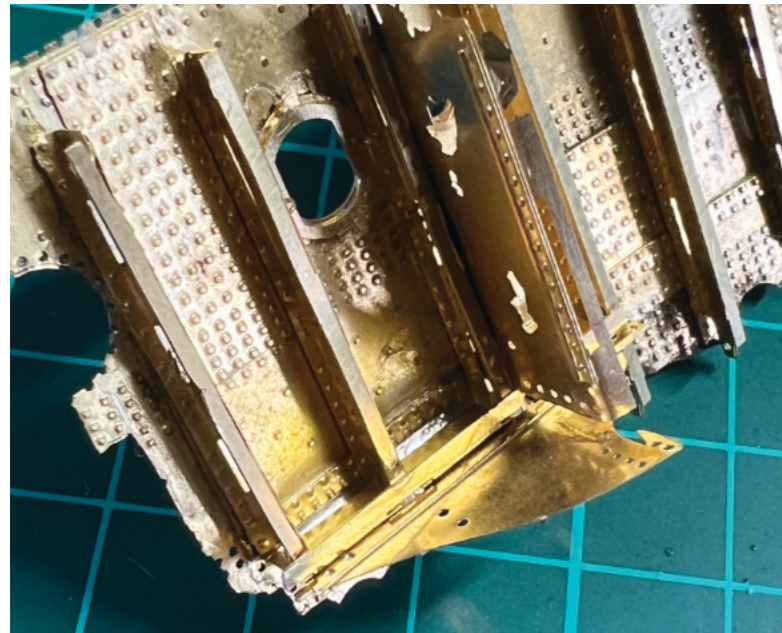
15

Add parts B17 to B16 as shown.  
Ensure there is a 0.5mm gap here



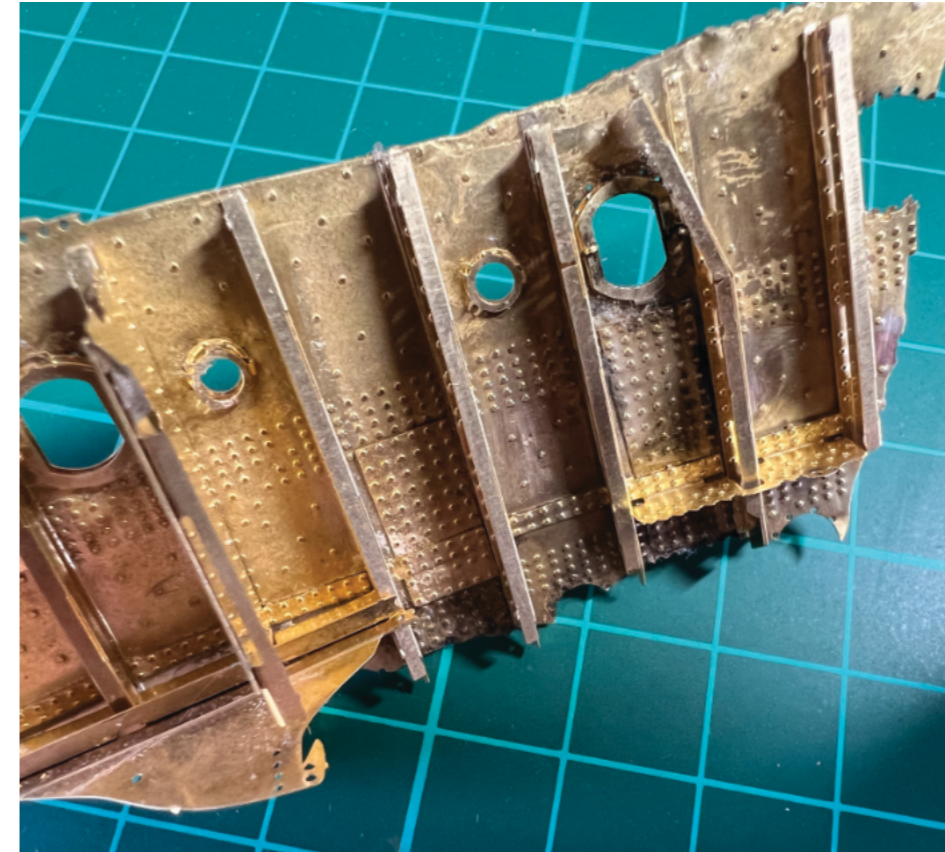
16

Add this assemble to the model here.  
It should perfectly slot around the frames.



17

Glue parts B19 onto the underside of B18 as shown.  
Fold the 2 small plates as shown.



18

Glue onto the model here. With the folded small plates facing up and inline with the other small plates on step 7.

**COMPLETE!**

